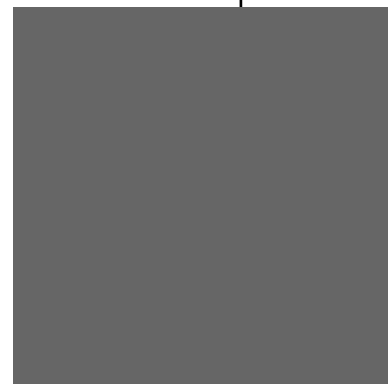


**Smart Loader Package SLP-CM1 for
Communication Controller CMC10B
(CPL/CPL Converter)**

User's Manual



Thank you for purchasing the SLP-CM1 for Communication Controller CMC10B (CPL/CPL Converter).

This manual contains information for ensuring correct use of the SLP-CM1. It also provides necessary information for installation, maintenance, and troubleshooting.

This manual should be read by those who design and maintain devices that use the CMC10B.

Be sure to keep this manual nearby for handy reference.

Yamatake Corporation

RESTRICTIONS ON USE

When using this product in applications that require particular safety or when using this product in important facilities, pay attention to the safety of the overall system and equipment. For example, install fail-safe mechanisms, carry out redundancy checks and periodic inspections, and adopt other appropriate safety measures as required.

REQUEST

Make sure that this Instruction Manual is handed over to the user before the product is used.

Copying or duplicating this Instruction Manual in part or in whole is forbidden. The information and specifications in this Instruction Manual are subject to change without notice.

Considerable effort has been made to ensure that this Instruction Manual is free from inaccuracies and omissions.

If you should find any inaccuracies or omissions, please contact Yamatake Corporation.

In no event is Yamatake Corporation liable to anyone for any indirect, special or consequential damages as a result of using this product.

© 2000 Yamatake Corporation ALL RIGHTS RESERVED

Dell® and OptiPlex® are registered trademarks of Dell Computer Corporation.

Pentium® and Intel® are registered trademark of Intel Corporation.

Microsoft®, MS-DOS®, Windows®, WindowsNT® and Microsoft® Excel are registered trademarks of Microsoft Corporation USA and other countries.

FMV-5166T3 are registered trademarks of Fujitsu Inc.

LBP-720 are BJC-620JW are registered trademarks of Canon Inc.

LP-1000 is a trademark of Epson Inc.


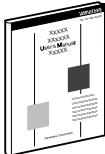
Unpacking

Check the following when removing the **SLP-CM1** from its package.

1. Check the model No. to make sure that you have received the product that you ordered.
2. Check the **SLP-CM1** for any apparent physical damage.
3. Check the contents of the package against the Package List to make sure that all accessories are included in the package.

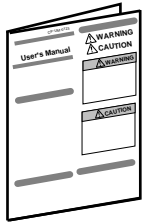
After unpacking, handle the **SLP-CM1** and its accessories taking care to prevent damage or loss of parts.

If an inconsistency is found or the package contents are not in order, immediately contact your dealer.

Name	Model No.	Q'ty	Remarks
SLP-CM1 System disk 	SLP-CM1E20	1	3.5" disk (1.44M byte) x 1 disk
Special cable (1 set)	—	1	
User's Manual 	CP-UM-5141E	1	This manual

The Role of This Manual

In all, three manuals have been prepared for the **CMC10B**. Read the manual according to your specific requirements. The following lists all the manuals that accompany the **CMC10B** and gives a brief outline of the manual. If you do not have the required manual, contact Yamatake Corporation or your dealer.



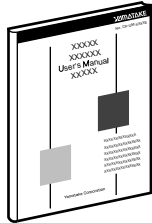
Communication Controller CMC10B (CPL/CPL converter)

Manual No. CP-UM-5129E

This manual is packaged with the CMC10B.

It describes only precautions and how to manual the CMC10B. Be sure to read this manual when installing and wiring the CMC10B.

For further details on how to handle the CMC10B, read the Communication Controller CMC10B (CPL/CPL Converter) Design Manual No. CP-SP-1064E.



Communication Controller CMC10B (CPL/CPL converter) User's Manual (Design Manual)

Manual No. CP-SP-1064E

This manual is required reading for those who use the CMC10B, those who design hardware for integrating the CMC10B into operator control panels, those who carry out maintenance, and those who operate instruments in which the CMC10B is integrated.

It describes an outline of the CMC10B, how to install and wire for integrating the CMC10B into other devices, communications functions, troubleshooting and specifications.



Smart Loader Package SLP-CM1 for Communication Controller CMC10B (CPL/CPL converter) User's Manual

Manual No. CP-UM-5141E

This manual.

This manual is packaged with the SLP-CM1 system disk.

Running the SLP-CM1 package on a personal computer enables you to set up CMC10B parameters on the personal computer.

This manual describes operations on the personal computer.

Organization of This User's Manual

This manual is organized as follows.

Chapter 1. INTRODUCTION

Be sure to read this chapter before you start using the Smart Loader Package. This chapter describes the required operating environment for the personal computer, how to install the package, and briefly introduces its features.

Chapter 2. INSTALLATION & BASIC FUNCTIONS

This chapter describes how to install, start up and quit the **SLP-CM1**, its functions, screen configurations and basic operations.

Chapter 3. METHODS OF OPERATION

This chapter describes methods of operations relating to the setup such as the environment setup, file operations, communications with the **CMC10B** and data setup.

Chapter 4. TROUBLESHOOTING

This chapter describes error messages that are displayed when trouble occurs, and how to remedy trouble.

Conventions Used in This Manual

The following conventions are used in this manual.



Handling Precautions

: Handling Precautions indicate items that the user should pay attention to when handling the **SLP-CM1**.



Note

: Notes indicate useful information that the user might benefit by knowing.

: Circled numbers indicate steps in a sequence or indicate corresponding parts in an explanation.

[Open] button

: Indicates a selection button in screens displayed on the personal computer.

[File], [Monitor], [Save] : Indicates messages and menus displayed on the personal computer.



: Indicates the result of an operation, details displayed on the personal computer or devices, or the state of a device after an operation.

[TAB] key, [F4] key

: Indicates keys on the keyboard.

[Ctrl]+[X] key

: Indicates the operation of pressing the [X] key with the [Ctrl] key on the keyboard held down.

Contents

Unpacking

The Role of This Manual

Organization of This User's Manual

Conventions Used in This Manual

Chapter 1. INTRODUCTION

- 1-1 Outline of the SLP-CM1 1
- 1-2 System Operating Environment 2
 - Hardware 2
 - Hardware Configuration 2
 - Personal Computer Used for Confirmation of Operating Environment . 2

Chapter 2. INSTALLATION & BASIC FUNCTIONS

- 2-1 Installation, Starting up and Quitting the Software Package 3
 - Installation 3
 - Starting Up SLP-CM1 5
 - Quitting SLP-CM1 5
- 2-2 Description of Functions 6
 - SLP-CM1 Functions 6
- 2-3 Screen Configuration 7
 - SLP-CM1 Screen Configuration 7

Chapter 3. METHODS OF OPERATION

- 3-1 Setting up the Environment 8
- 3-2 List of Operations 9
 - Menu Screen 9
 - Edit Screen 9
 - Monitor Screen 9
- 3-3 File Operations 10
 - Making New Files 10
 - Opening Existing Files 10
 - Overwriting and Saving Files 10
 - Saving Files With a New Name 11
 - Outputting CSV Format Files 11
- 3-4 Communications with the CMC10B 12
 - Communicating to the SLP-CM1 from the CMC10B
(reading to SLP-CM1) 12
 - Communicating to the CMC10B from the SLP-CM1
(writing from SLP-CM1) 12
- 3-5 Setting Up Data 13
 - Selecting Setup Items 13
 - Entering Numerical Data 13
- 3-6 Monitor 15
 - Monitoring the CMC10B 15
 - Executing Auxiliary Functions 15

Chapter 4. TROUBLESHOOTING

- 4-1 Error Messages 16
 - Communications Error Messages 16
 - File Error Messages 16
 - Startup Error Messages 16

Chapter 1. INTRODUCTION

1 - 1 Outline of the SLP-CM1

The SLP-CM1 is an engineering tool for the Communication Controller CMC10B.
The SLP-CM1 software package runs on Windows95/98 on a personal computer.
The SLP-CM1 has the following functions:

- Parameter setup
- Communications with CMC10B (reading/writing of parameters)
- File operations (reading/writing of parameters)

Note

Install SLP-CM1 on the hard disk following the procedure in “■ Installation” (page 3).
Use the system disk that you have purchased as the backup system.

Handling Precautions

This disk do not contain the system, and cannot be used as they are.

1 - 2 System Operating Environment

The following system environment is required for using the SLP-CM1.

■ Hardware

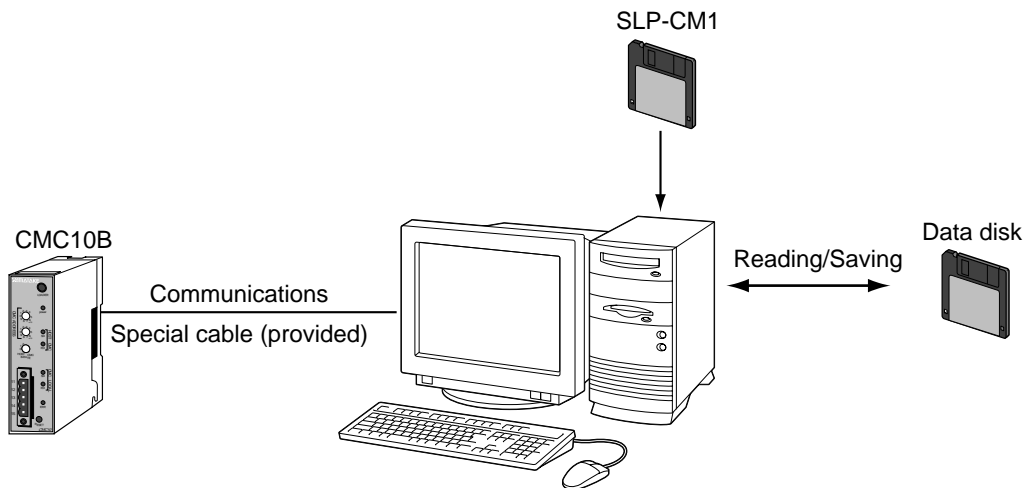
Item	Description	
Personal Computer	Target model	PC/AT compatibles with a Pentium chip or higher
	Memory	32M byte or more
	Operating system	Windows95/98
Peripheral Devices	Display	Windows95/98-compatible display connectable to or built-into computer body
	Serial port	9-pin, serial port, 1ch or more
	Hard disk drive	Hard disk with at least 40M byte of free space
	Floppy disk drive	At least 1 drive capable of reading the floppy disk in the product package (1.44M byte format)
	Pointing device	Windows95/98-compatible mouse or equivalent device

! Handling Precautions

Before starting up SLP-CM1, quit all other applications.

If you start up SLP-CM1 while another application is running, SLP-CM1 may malfunction.

■ Hardware Configuration



■ Personal Computer Used for Confirmation of Operating Environment

Manufacturer	Model No.
Dell	Optiplex Gxi5200
Dell	Optiplex GX5166
Fujitsu	FMV-5166T3

Chapter 2. INSTALLATION & BASIC FUNCTIONS

2 - 1 Installation, Starting up and Quitting the Software Package

■ Installation

This section describes how to install the SLP-CM1 on a personal computer.

! Handling Precautions

If you start up the Installer while another application is running, the Installer may malfunction.

Remove other resident applications from their directories before starting up the Installer.

The SLP-CM1 sometimes cannot be started up depending on the combination of other applications and drivers.

For details on Windows95/98 and personal computer settings, refer to the User's Manuals provided with Windows95/98 and the personal computer.

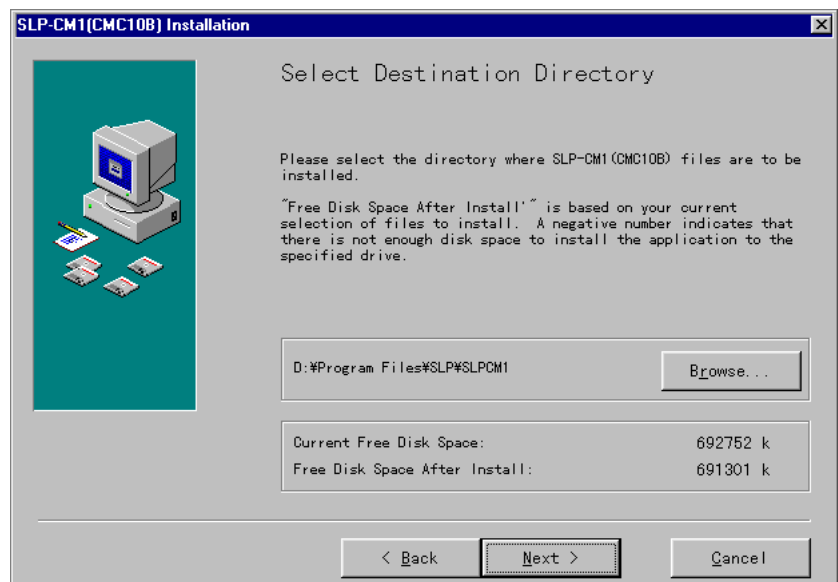
● Installing SLP-CM1

Click the [Start] button at the bottom of the screen, and then click [Settings]-[Control Panel].

Double-click [Add/Remove Programs], and click [Install].

Insert the disk provided with the software package into the disk drive, click [Next>] and then [Finish].

▶ The Installer is started.

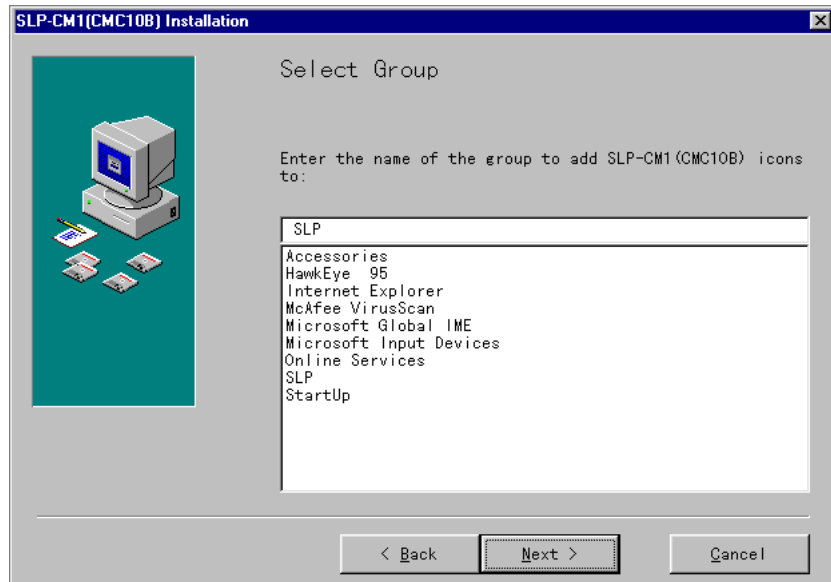


📖 Note

To change the installation destination directory, click [Browse...].

Click [Next>].

- ▶ The following screen appears, and groups already installed are displayed in Existing Folders.



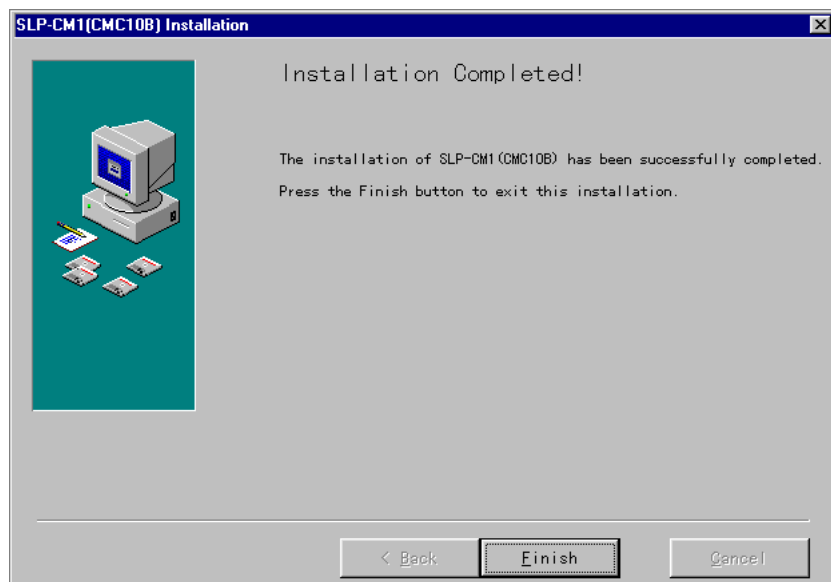
Click [Next>].

 **Note**

To change the program folder, enter the new folder name.

Click [Finish].

- ▶ When installation ends normally, the following screen appears:



■ Starting Up SLP-CM1

Click [Start] on the task bar, and click the SLP-CM1 (CMC10B) under [Programs]-[SLP].

- ▶ The SLP-CM1 is started up, and the menu window is displayed.



Note

For details on the operating system and the mouse you are using, refer to the User's Manual provided with Windows95/98.

■ Quitting SLP-CM1

Click [close] at the top right of the screen.

The operation is the same by selecting the [Menu]-[Quit] command.

- ▶ The following screen appears:



Click [OK].

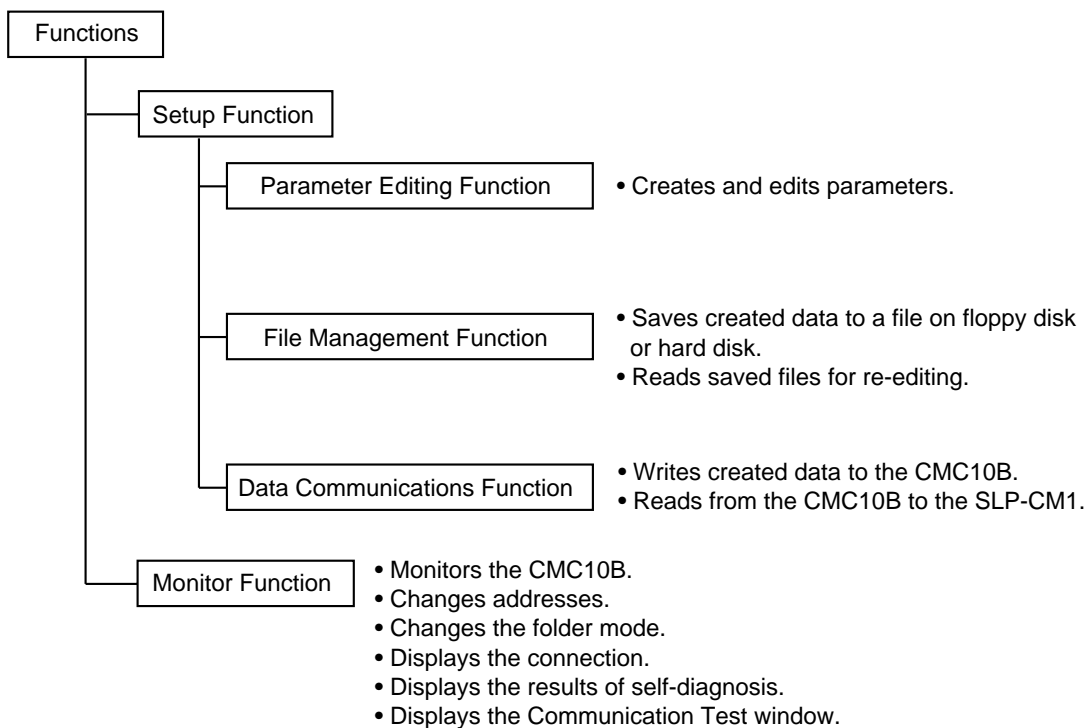
2 - 2 Description of Functions

■ SLP-CM1 Functions

The SLP-CM1 is provided with the following functions for configuring CMC10B functions:

- Parameter Editing Function
- File Management Function
- Data Communications Function
- Monitor Function

The figure below shows operations available by these functions.



Note

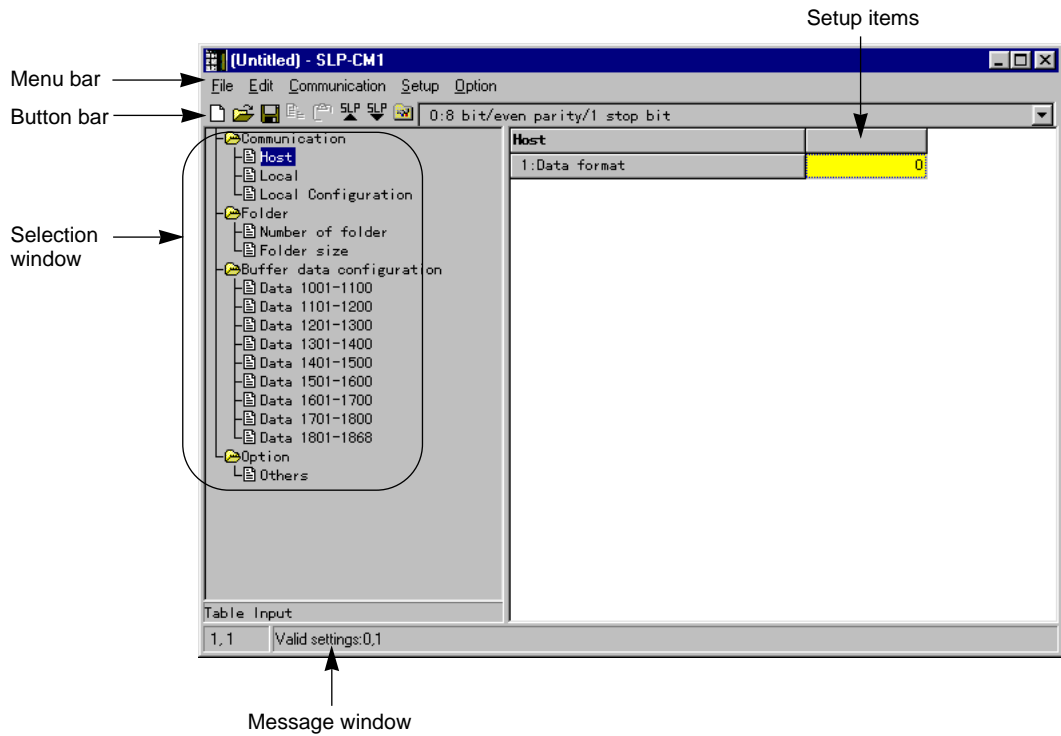
“One file” refers to data for one CMC10B.

Each file comprises the various parameter settings and the model number information.

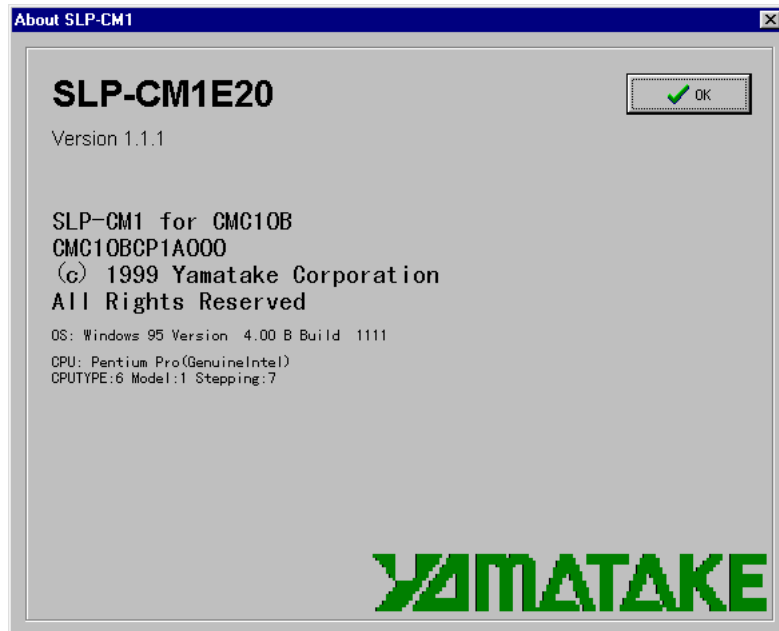
2 - 3 Screen Configuration

■ SLP-CM1 Screen Configuration

- Basic SLP-CM1 screen



- Dialog box displayed when [Help]-[Version (A)] is selected



Chapter 3. METHODS OF OPERATION

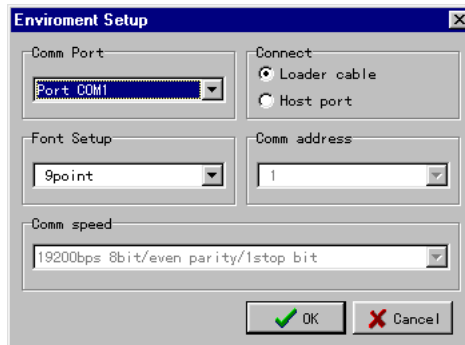
3 - 1 Setting up the Environment

Set the communications port and font on the personal computer.

Click [Environment Setup].

The operation is the same by selecting the [Option]-[Environment Setup] command or the [Ctrl]+[E] keys.

- ▶ The Environment Setup dialog box appears.



Set the communications port. Select the various settings.

Set the font size. Select the various settings.

Click [OK].

Handling Precautions

Normally, use "COM1".

Even if another communications port can be selected, it sometimes cannot be used depending on its shape.

3 - 2 List of Operations

■ Menu Screen

Menu	Sub Menu 1	Sub Menu 2	Description	Shortcut keys
Menu	Setup		Displays the Setup window.	Ctrl+S
	Monitor		Displays the Monitor window.	Ctrl+M
	Environment Setup		Changes the environment setup.	Ctrl+E
	Quit		Quits the Smart Loader Package.	Ctrl+Q
Help	Version (A)		Displays the version information.	Ctrl+A

■ Edit Screen

Menu	Sub Menu 1	Sub Menu 2	Description	Shortcut keys
File	New		Create a new data	Ctrl+N
	Open		Opens a existing data	Ctrl+O
	Save		Saves the active data	Ctrl+S
	Save As		Saves the active data with a new name	Ctrl+A
	CSV Out (X)		Saves the active data in CSV format	Ctrl+X
	Quit		Quits the application	Ctrl+Q
Edit	Bit input		Inputs to bit lists.	Ctrl+B
	Copy		Stores the copy source.	Ctrl+C
	Paste		Pastes the stored copy data.	Ctrl+V
Communi- cation	Read (CMC10B to SLP)		Reads the device data.	Ctrl+R
	Write (SLP to CMC10B)		Write the data to the device.	Ctrl+W
Setup	Communication	Host (A)	Displays the host setup.	Ctrl+Shift+A
		Local (B)	Displays the local setup.	Ctrl+Shift+B
		Local Configuration (C)	Displays the host setup.	Ctrl+Shift+C
	Folder	Number of folder (D)	Displays the number of folder setup.	Ctrl+Shift+D
		Folder size (E)	Displays the folder size setup.	Ctrl+Shift+E
	Buffer data configuration	Data 1001-1100 (F)	Displays data 1001 to 1100.	Ctrl+Shift+F
		Data 1101-1200 (G)	Displays data 1101 to 1200.	Ctrl+Shift+G
		Data 1201-1300 (H)	Displays data 1201 to 1300.	Ctrl+Shift+H
		Data 1301-1400 (I)	Displays data 1301 to 1400.	Ctrl+Shift+I
		Data 1401-1500 (J)	Displays data 1401 to 1500.	Ctrl+Shift+J
		Data 1501-1600 (K)	Displays data 1501 to 1600.	Ctrl+Shift+K
		Data 1601-1700 (L)	Displays data 1601 to 1700.	Ctrl+Shift+L
	Data 1701-1800 (M)	Displays data 1701 to 1800.	Ctrl+Shift+M	
Data 1801-1868 (N)	Displays data 1801 to 1868.	Ctrl+Shift+N		
Option	Other (O)	Displays other information.	Ctrl+Shift+O	
Option	Environment Setup		Changes the environment setup.	Ctrl+E

■ Monitor Screen

Menu	Sub Menu 1	Sub Menu 2	Description	Shortcut keys
File	Quit		Quits the monitor window.	Ctrl+Q
Monitor	Start/Stop (M)		Starts/stops the monitor.	Ctrl+M
	Address		Changes the monitor start address.	
	Backward		Advances the address backward.	
	Forward		Advances the address forward.	
Option	Display in hexadecimal		Displays the monitor in hexadecimal.	
	Folder mode		Changes the folder mode.	
	Connection		Displays the connection.	
	Self diagnosis		Displays the results of Self-diagnosis.	
	Communication test (L)		Displays the Communication test window.	

3 - 3 File Operations

■ Making New Files

Click [New].

The operation is the same by selecting the [File]-[New] command or the [Ctrl]+[N] keys.

- ▶ The New dialog box appears.
Click [OK].
- ▶ A new file opens.

■ Opening Existing Files

Click [Open].

The operation is the same by selecting the [File]-[Open] command or the [Ctrl]+[O] keys.

- ▶ The [Open] dialog box appears.



Select the folder name in [Look in...].

Click (select) the file name.

Click [Open].

- ▶ The file having the name that you set opens.

■ Overwriting and Saving Files

Click (select) [Save].

The operation is the same by selecting the [File]-[Save] command or the [Ctrl]+[S] keys.

- ▶ The file is overwritten and saved.

■ Saving Files With a New Name

Select the [File]-[Save As] command.

The operation is the same by selecting the [Ctrl]+[A] keys.

- ▶ The [Save As] dialog box appears.
Select the folder name under [Save in:].
Enter the file name to [File name].
Click [Save].
- ▶ The file is saved under the file name that you set.

Note

The file is overwritten and saved when you click (select) the file name at the [File name] window.

■ Outputting CSV Format Files

Select the [File]-[CSV Out (X)] command.

The operation is the same by selecting the [Ctrl]+[X] keys.

- ▶ The CSV output dialog box appears.
Select the folder name under [Save in:].
Enter the file name to [File name].
Click [Save].
- ▶ The file is output under the file name that you set.

Note

The file is overwritten and saved when you click (select) the file name at the [File name] window.

A CSV format file is a text file delimited by commas, and can be used in Microsoft Excel or other off-the-shelf spreadsheet applications.

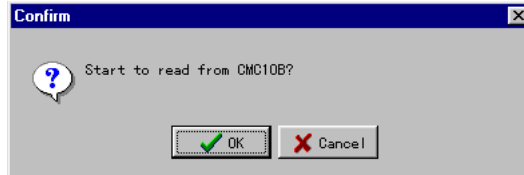
3 - 4 Communications with the CMC10B

■ Communicating to the SLP-CM1 from the CMC10B (reading to SLP-CM1)

Click [Read (CMC10B to SLP)].

The operation is the same by selecting the [Communication]-[Read (CMC10B to SLP)] command or the [Ctrl]+[R] keys.

- ▶ The Confirm dialog box appears.



Click [OK].

- ▶ Reading to the SLP-CM1 starts.

■ Communicating to the CMC10B from the SLP-CM1 (writing from SLP-CM1)

Click [Write (SLP to CMC10B)].

The operation is the same by selecting the [Communication]-[Write (SLP to CMC10B)] command or the [Ctrl]+[W] keys.

- ▶ The Confirm dialog box appears.

Click [OK].

- ▶ Writing to the CMC10B starts.

3 - 5 Setting Up Data

■ Selecting Setup Items

● Moving the highlight section on the display by operating the keyboard

Press the [↑], [↓], [←] or [→] key to move the highlighted section on screen.

● Moving the highlight section on the display by operating the mouse

Click the section you want to move.

Click the scroll bar to scroll the screen.

- ▶ The screen cannot be scrolled beyond the topmost or bottommost rows on screen.

● Changing operation windows

Press the [TAB] key.

- ▶ The screen moves to the target operation window.

Note

Setup items are moved to in order on screen.

■ Entering Numerical Data

● Entering numerical values

The following describes how numerical values are entered:

- To enter a numerical value, press the [0] to [9] keys on the keyboard.
- To enter a hexadecimal number, press the [0] to [9] keys or the [A] to [F] keys on the keyboard.
- To enter a decimal point, press the [.] key at the desired decimal point position.
- To enter a minus value, press the [—] key.
- To cancel a wrong entry, press the [BACK SPACE] key.
 - ▶ The current displayed value is deleted.
- To cancel the currently entered numerical value, press the [ESC] key.
 - ▶ Original set value is redisplayed.

● Entering values to setup items

Use the [0] to [9] keys on the keyboard to enter values to setup items.

Select the setup item to highlight it.

Enter the desired set value by the [0] to [9] keys.

Press the [ENT] key.

The operation is the same by pressing the [↑] or [↓] key.

- ▶ The set value is fixed.

Note

- After you have fixed the numerical value by pressing the [↑] or [↓] key, the highlight section moves on screen.

When you have moved a setup item using the mouse, the set value is not fixed.
- When a set value is invalid, the original set value is redisplayed.

To cancel a set value midway during entry, press the [ESC] key before you fix the set value.

● Selecting and entering data

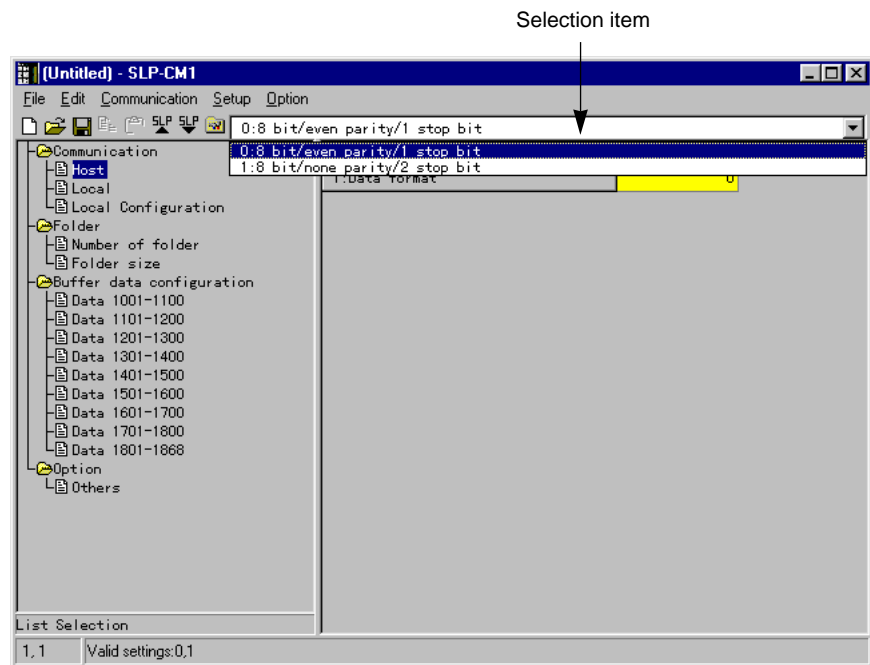
 **Note**

Items that can be selected and entered are automatically displayed.

Press a setup item button.

The operation is the same by selecting the [TAB] or [ALT]+[↓] keys.

▶ Selection Item is displayed.



Select the setup item by the mouse.

The operation is the same by selecting the [↑], [↓], [←] or [→] key, or the [ENT] key.

▶ The set value is fixed.

 **Note**

When you use the mouse, the set value is fixed at the same time that you select it with the mouse.

3 - 6 Monitor

The following monitor screen is displayed if you select [Monitor] in the menu window (page 5) that is displayed when the SLP-CM1 is started up.

The screenshot shows a window titled "SLP-CM1 Monitor /Monitor :OFF". The menu bar includes "File", "Monitor", and "Option". Below the menu bar, there are four buttons: "Start", "Address", "Backward", and "Forward". The main area is a table with 11 columns: "Address", "+1", "+2", "+3", "+4", "+5", "+6", "+7", "+8", "+9", and "+10". The rows represent memory addresses from 1000 to 1190 in increments of 10. All cells in the table contain "----".

Address	+1	+2	+3	+4	+5	+6	+7	+8	+9	+10
1000	----	----	----	----	----	----	----	----	----	----
1010	----	----	----	----	----	----	----	----	----	----
1020	----	----	----	----	----	----	----	----	----	----
1030	----	----	----	----	----	----	----	----	----	----
1040	----	----	----	----	----	----	----	----	----	----
1050	----	----	----	----	----	----	----	----	----	----
1060	----	----	----	----	----	----	----	----	----	----
1070	----	----	----	----	----	----	----	----	----	----
1080	----	----	----	----	----	----	----	----	----	----
1090	----	----	----	----	----	----	----	----	----	----
1100	----	----	----	----	----	----	----	----	----	----
1110	----	----	----	----	----	----	----	----	----	----
1120	----	----	----	----	----	----	----	----	----	----
1130	----	----	----	----	----	----	----	----	----	----
1140	----	----	----	----	----	----	----	----	----	----
1150	----	----	----	----	----	----	----	----	----	----
1160	----	----	----	----	----	----	----	----	----	----
1170	----	----	----	----	----	----	----	----	----	----
1180	----	----	----	----	----	----	----	----	----	----
1190	----	----	----	----	----	----	----	----	----	----

The following describes the operations available in the monitor screen.

■ Monitoring the CMC10B

- To start monitoring
Select the [Monitor]-[Start] command.
The operation is the same by selecting the [Ctrl]+[M] keys.
- To stop monitoring
Select the [Monitor]-[Stop] command.
The operation is the same by selecting the [Ctrl]+[M] keys.
- To change the address to be monitored
Select the [Monitor]-[Address] command.

■ Executing Auxiliary Functions

- To change the folder mode
Select the [Option]-[Folder mode] command.
- To check the connection
Select the [Option]-[Connection] command.
- To display the results of self-diagnosis
Select the [Option]-[Self diagnosis] command.
- To display the Communication test screen
Select the [Option]-[Communication test] command.
In the Communication test screen, you can send CPL commands to the CMC10B.

Chapter 4. TROUBLESHOOTING

4 - 1 Error Messages

■ Communications Error Messages

Category	Message	Description	Remedy
Communications error	"Time out"	Could not receive message during time out preset time.	Check cable connections and contacts.
	"Cannot open communications port"	Could not open communications port.	Do not use the communications port at the same time as software that is using other communications ports.
	"Communications error has occurred"	A system error occurred.	Quit SLP-CM1, and reboot Windows95/98.
CMC10B status error	"Check currently connected instruments."	Currently connected instrument is not an CMC10B. Or, CMC10B is not connected.	Connect the CMC10B before use.
	"Cannot support currently connected CMC10B"	Versions of SLP-CM1 and CMC10B in use are not supported.	Contact your dealer.

■ File Error Messages

Category	Message	Description	Remedy
File name error	"This filename is not valid."	An invalid file name has been entered.	Enter the correct file name.
	"This file cannot be found. Make sure that the correct path and filename are given."	A non-existent file name has been entered.	Correctly enter the name of an existent file.
	"This filename is a reserved device name. Use a different filename."	A file name reserved as a device name has been entered.	Enter the correct file name.
Disk error	"Not enough free space on disk"	There is not enough free space on disk.	Secure enough free space on disk.
	"The device is not ready."	The disk is not prepared.	Prepare a disk, and repeat the operation.
	"Cannot make file"	The save destination is a CD-ROM.	Save to a different destination.
	"File name too long"	The file name is too long.	Limit file names to 255 or less characters.
Path name error	"The path does not exist. Make sure that the correct path is given."	An illegal path name has been entered.	Enter the correct path name, and repeat the operation.
File information error	"Illegal file size"	File is damaged.	Damaged files cannot be used. Make a new file.
	"Illegal file information"		

■ Startup Error Messages

Category	Message	Description	Remedy
SLP-CM1 system error	"Cannot start up two or more SLP-CM1s at once."	An attempt was made to start up two or more SLP-CM1s at once.	Press the [OK] button.

Specifications are subject to change without notice.

YAMATAKE

Yamatake Corporation

IBD Sensing and Control Department

Totate International Building

2-12-19 Shibuya Shibuya-ku Tokyo 150-8316 Japan

Phone: 81-3-3486-2311

Fax: 81-3-3486-2300

This has been printed on recycled paper.

Printed in Japan.
1st Edition: Issued in June, 2000(W)